

PHANTOM®

GEN 3 | VIBRATION SENSOR

CERTIFICATIONS



**HIGH RANGE**
(EPH-V11E)**Frequency Range:**

0.5 Hz - 10 kHz [x,y]

0.5 Hz - 5.1 kHz [z]

Data Receiving Interval:Captures data as often as
every minute*(configurable)***Dynamic Range:** $\pm 8 / \pm 16 / \pm 32$ g**Sensitivity:**

100 mV/G

MEASUREMENT

Product code	EPH-V11E				
Built-in sensor	MEMS Sensor				
Sensing resolution (X, Y, Z)	240 μ g				
Frequency range (@ 25,600)	0.5 Hz to 10 kHz (X,Y), 0.5 Hz to 5.1 kHz (Z)				
Dynamic range (configurable)	$\pm 8 / \pm 16 / \pm 32$ g				
Recording time (s) 3 axes	1	2	4	8	16
Recording time (s) 1 axes	3	6	12	24	48
Sample rate (Hz)	25,600	12,800	6,400	3,200	1,600
Max frequency (Hz) [x,y]	10,000	5,000	2,500	1,250	625
Max frequency (Hz) [z]	5,100	5,000	2,500	1,250	625
Resolution lines	Triaxial - 12,800 Single Axis - 25,600				
Spectral noise (10 Hz)	630 μ g \sqrt Hz				

CONNECTIVITY AND SOFTWARE

Wireless protocol	Bluetooth BLE 5.0
Operating frequency	2.4 GHz
Transmission power	± 8 dBm
Signal strength range	-90 dBm to -30 dBm
Power output range	-4 dBm to +8 dBm <i>(configurable)</i>
Devices compatibility	iOS and Android devices (<i>WiSER®Vibe</i> & <i>PHANTOM™ Manager</i>) and <i>PHANTOM™ Gateway</i>
Software compatibility	DigivibeMX 11 M30 & <i>PHANTOM™ Version</i> / <i>PHANTOM™ Manager</i> and <i>WiSER®VIBE</i>
Operating distance	100m Line of sight*

DIMENSIONS AND FIXTURE

Dimensions (h x w)	47mm x 33mm
Protection grade	IP69
Weight	185 grams
Fixture	Fastener 1/4-28 UNF
Housing material	ABS, stainless steel

ENVIRONMENTAL CONDITIONS

Operating temperature	-40 °C to 80 °C (40 °F to 176 °F)
-----------------------	-----------------------------------

*Ideal environment. No competing signals or obstructions.

**HIGH SENSITIVITY**
(EPH-V10E)**Frequency Range:**0.5 Hz - 4 kHz [x,y]
0.5 Hz - 1.8 kHz [z]**Data Receiving Interval:**Captures data as often as
every minute
(configurable)**Dynamic Range:** $\pm 2 / \pm 4 / \pm 8$ g**Sensitivity:**

100 mV/G

MEASUREMENT

Product code	EPH-V10E				
Built-in sensor	MEMS Sensor				
Sensing resolution (X, Y, Z)	60 μ g				
Frequency range (@ 25,600)	0.5 Hz to 4 kHz (X,Y), 0.5 Hz to 1.8 kHz (Z)				
Dynamic range (configurable)	$\pm 2 / \pm 4 / \pm 8$ g				
Recording time (s) 3 axes	1	2	4	8	16
Recording time (s) 1 axes	3	6	12	24	48
Sample rate (Hz)	25,600	12,800	6,400	3,200	1,600
Max frequency (Hz) [x,y]	4,000	4,000	2,500	1,250	625
Max frequency (Hz) [z]	1,800	1,800	1,800	1,250	625
Resolution lines	Triaxial - 12,800 Single Axis - 25,600				
Spectral noise (10 Hz)	130 μ g \sqrt Hz				

CONNECTIVITY AND SOFTWARE

Wireless protocol	Bluetooth BLE 5.0
Operating frequency	2.4 GHz
Transmission power	± 8 dBm
Signal strength range	-90 dBm to -30 dBm
Power output range	-4 dBm to +8 dBm (configurable)
Devices compatibility	iOS and Android devices (WiSER®Vibe & PHANTOM™ Manager) and PHANTOM™ Gateway
Software compatibility	DigivibeMX 11 M30 & PHANTOM™ Version / PHANTOM™ Manager and WiSER®VIBE
Operating distance	100m Line of sight*

DIMENSIONS AND FIXTURE

Dimensions (h x w)	47mm x 33mm
Protection grade	IP69
Weight	185 grams
Fixture	Fastener 1/4-28 UNF
Housing material	ABS, stainless steel

ENVIRONMENTAL CONDITIONS

Operating temperature	-40 °C to 80 °C (40 °F to 176 °F)
-----------------------	-----------------------------------

*Ideal environment. No competing signals or obstructions.

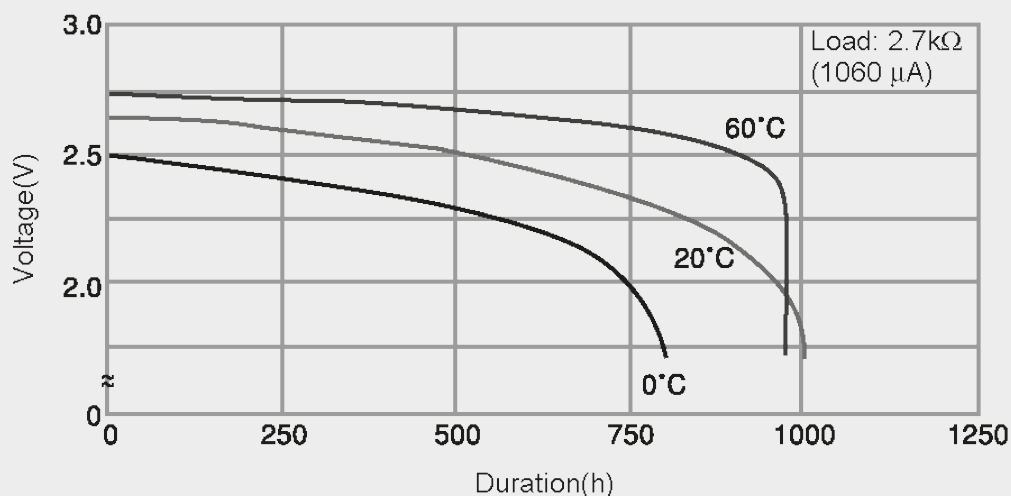


BATTERY INFORMATION

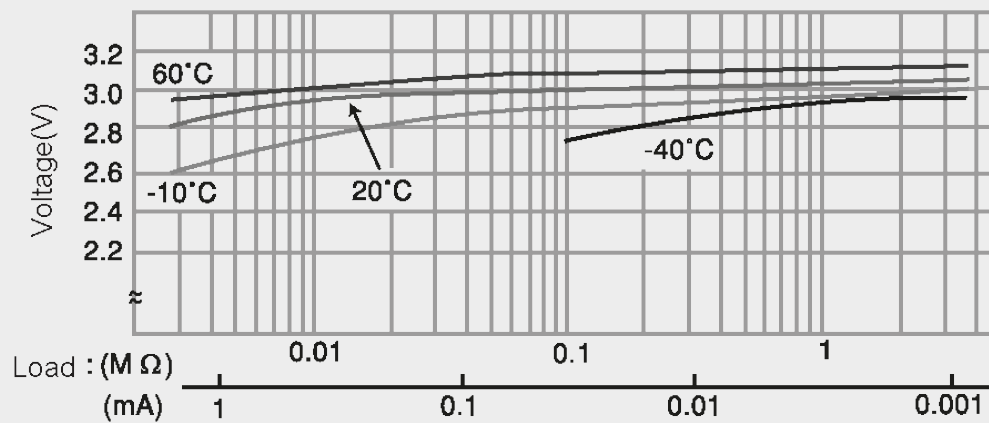
POWER SUPPLY

Battery type	Lithium battery (CR2477)
Battery life	65,000 measurements (duration depends on user configuration)*
	Standby mode if a gateway is not detected
	Consumption of 6-9 μA in Standby mode

DISCHARGE CHARACTERISTICS



VOLTAGE VS. TEMPERATURE

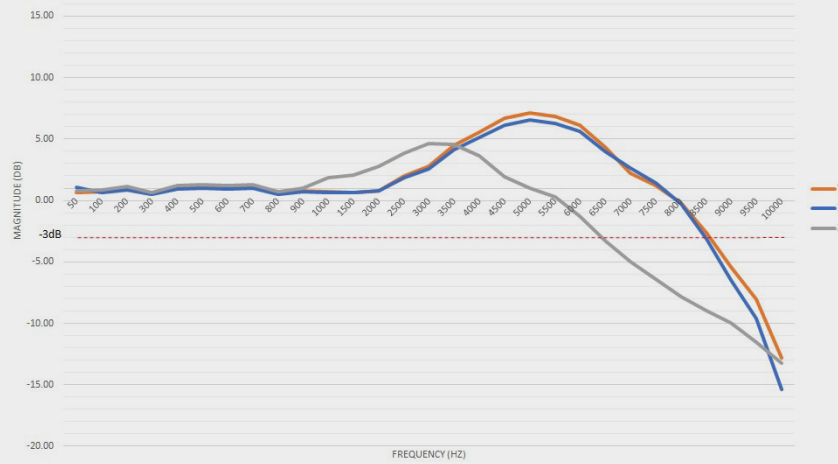


*Battery life is directly affected by temperature, frequency of alarms, and other factors independent of user settings.

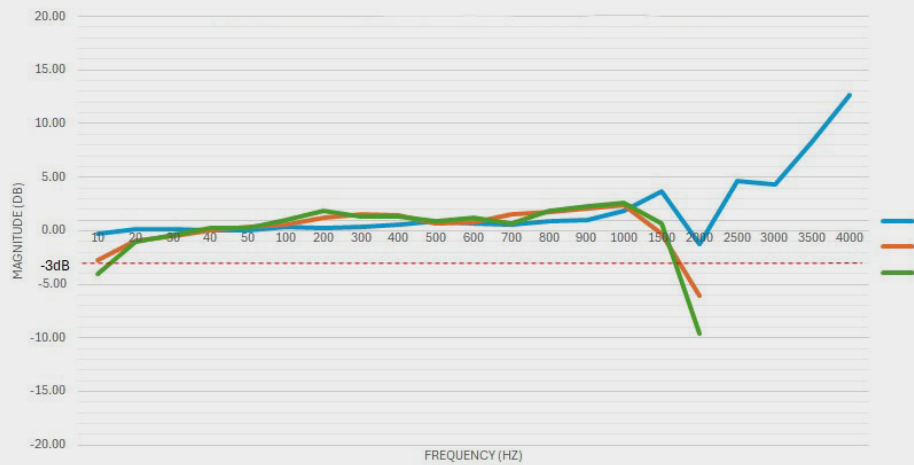


FREQUENCY RESPONSE

PHANTOM EPH-V11E



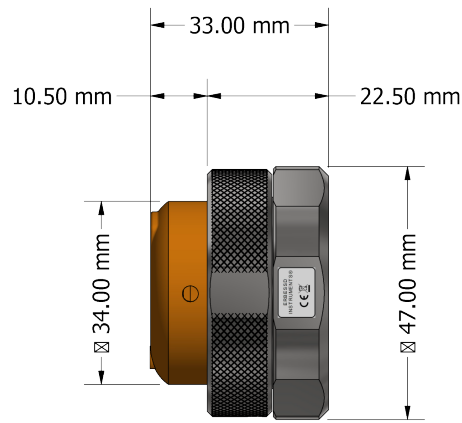
PHANTOM EPH-V10E



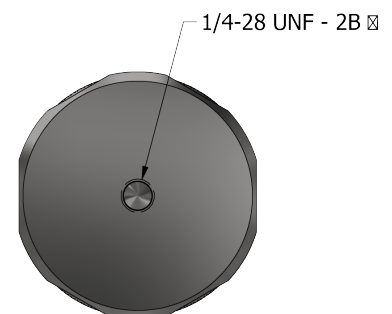
DIMENSIONS



FRONT VIEW



SIDE VIEW



REAR VIEW